



U.S. President's Malaria Initiative



Session 5:

IDENTIFICATION OF MALARIA-CARRYING MOSQUITOES



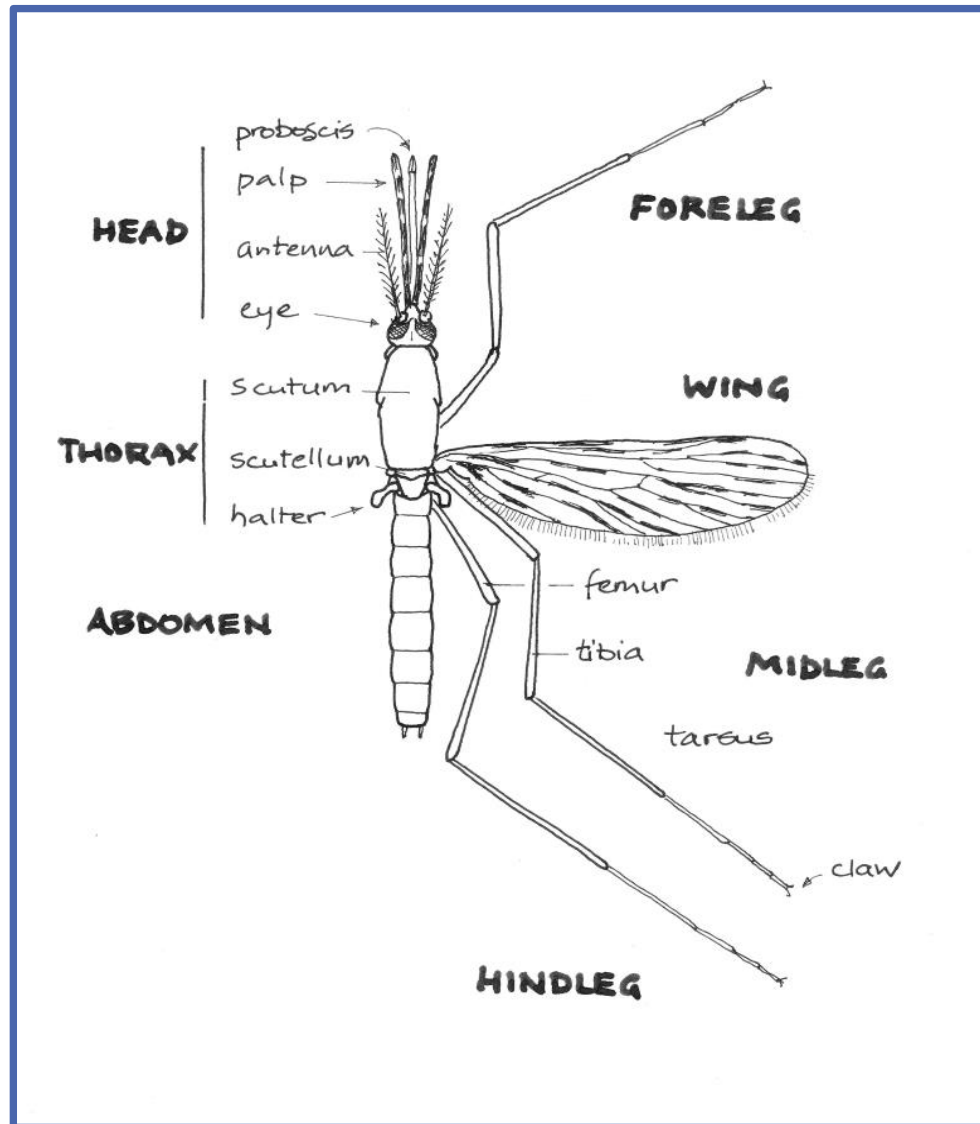
Session objectives

By the end of this session, you will be able to:

- Describe the major external features of *Anopheles* used for species identification
- Explain how to use pictorial guides to differentiate between *Anopheles gambiae* and the *Anopheles funestus* from other *Anopheles* species

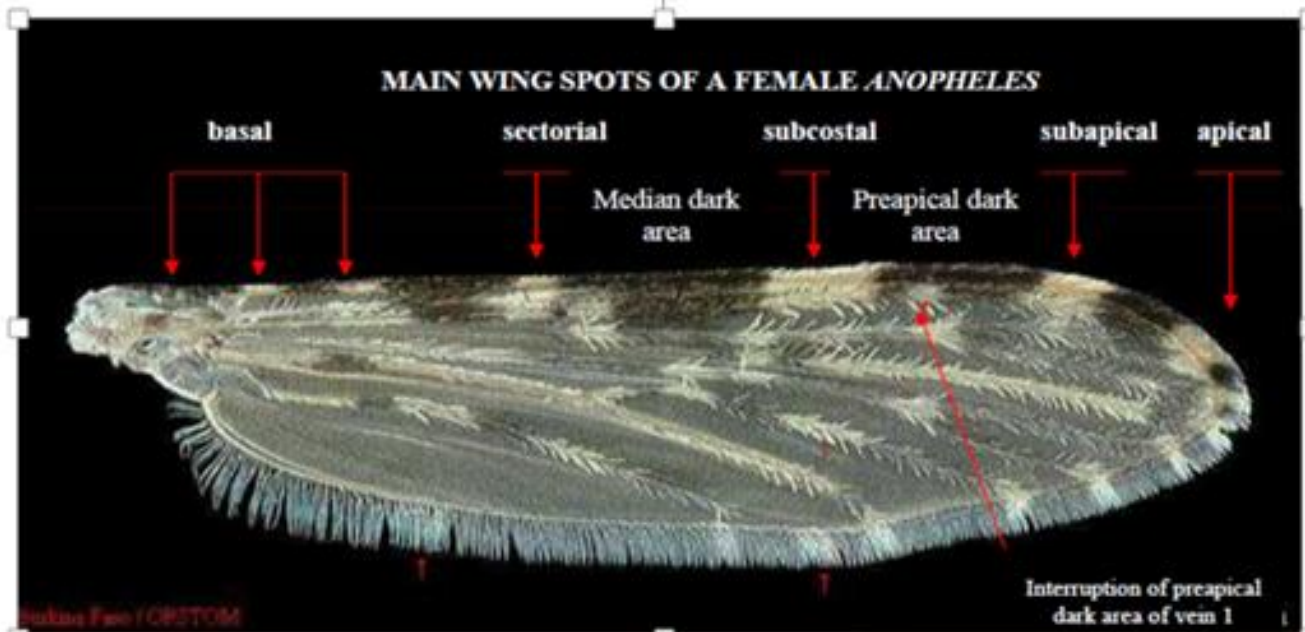
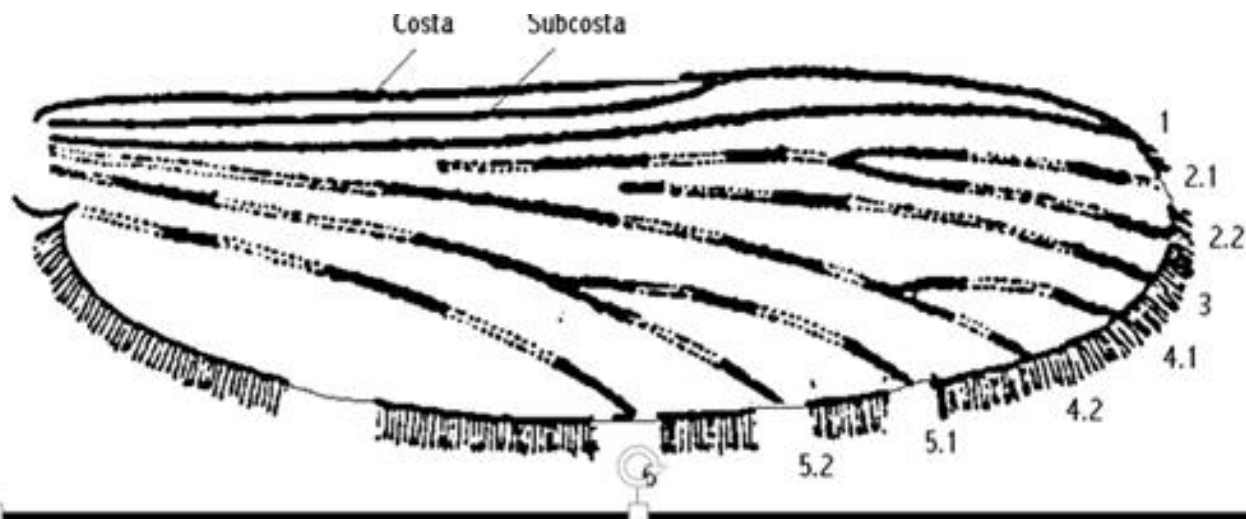


Anatomy of a mosquito



Features for species identification

- Scales on the wing



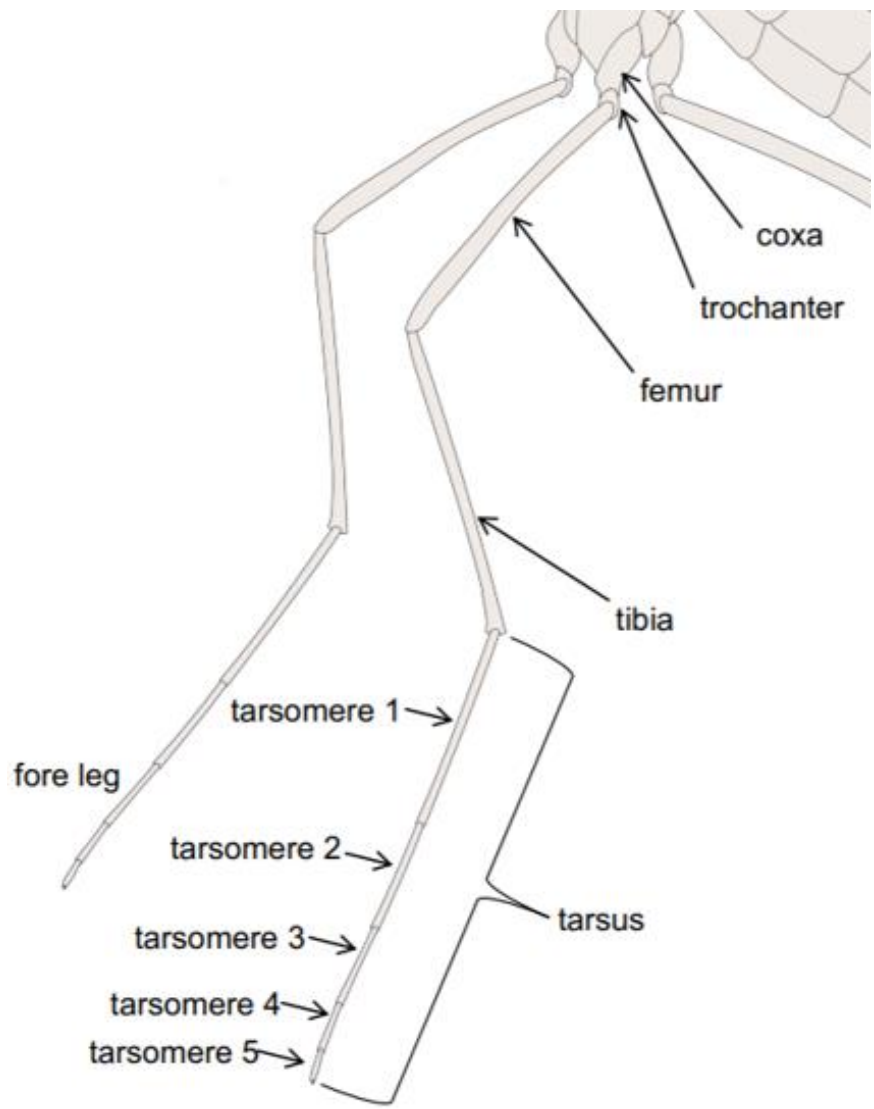


Scales on the Abdomen that help identify



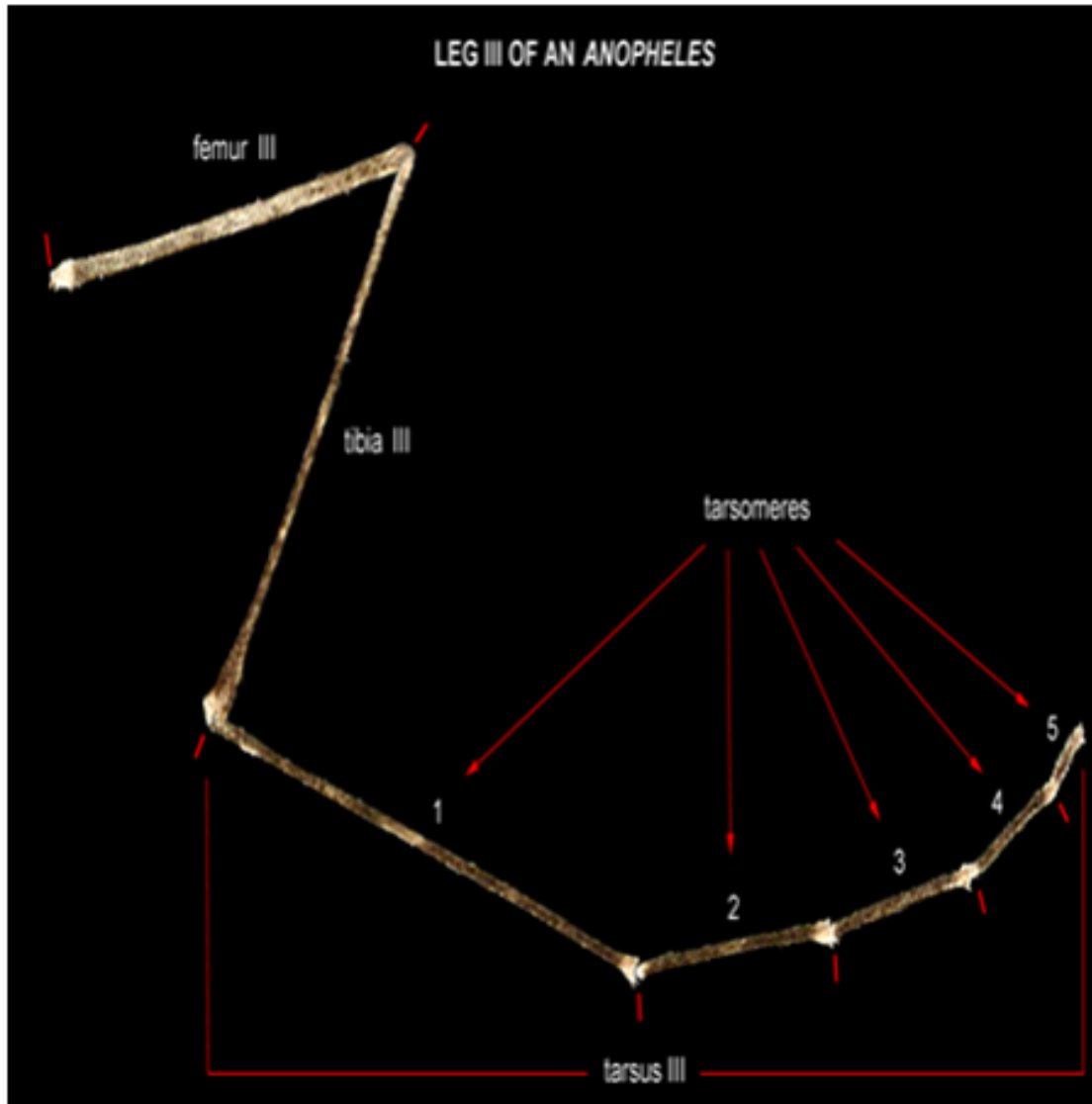


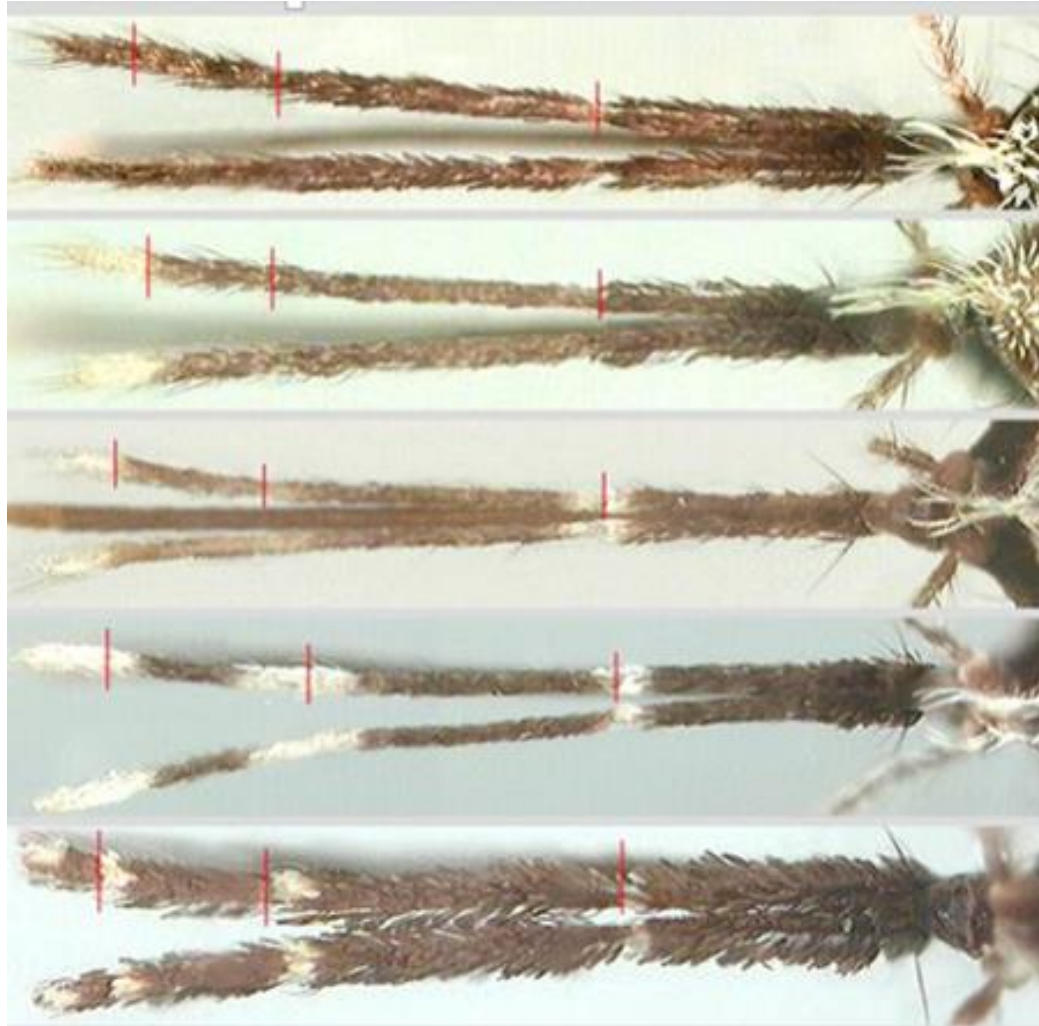
Mosquito legs





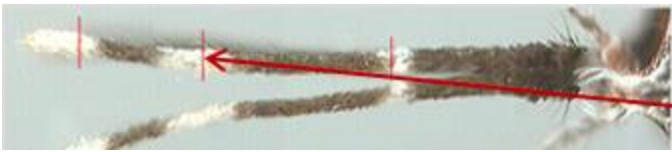
Anopheles leg







Anopheles Mosquito

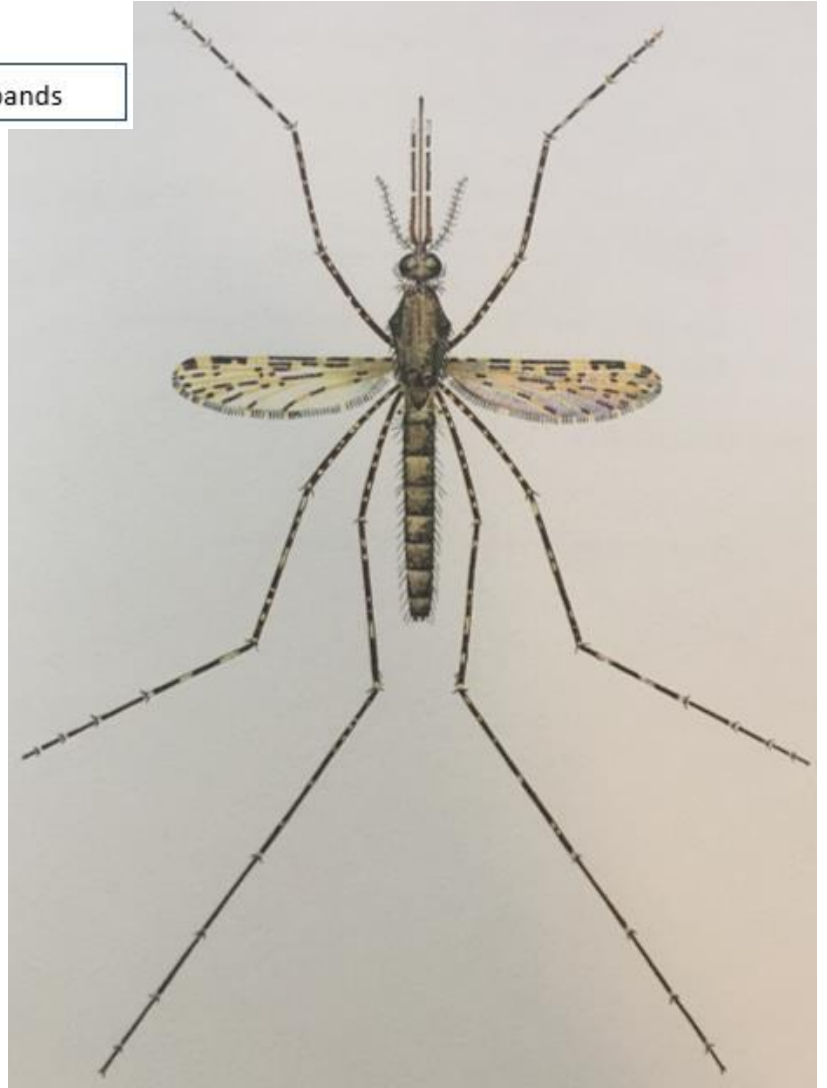
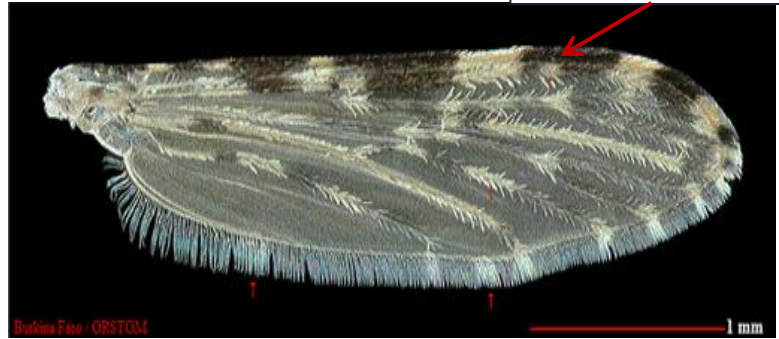


Palps with 3 white bands



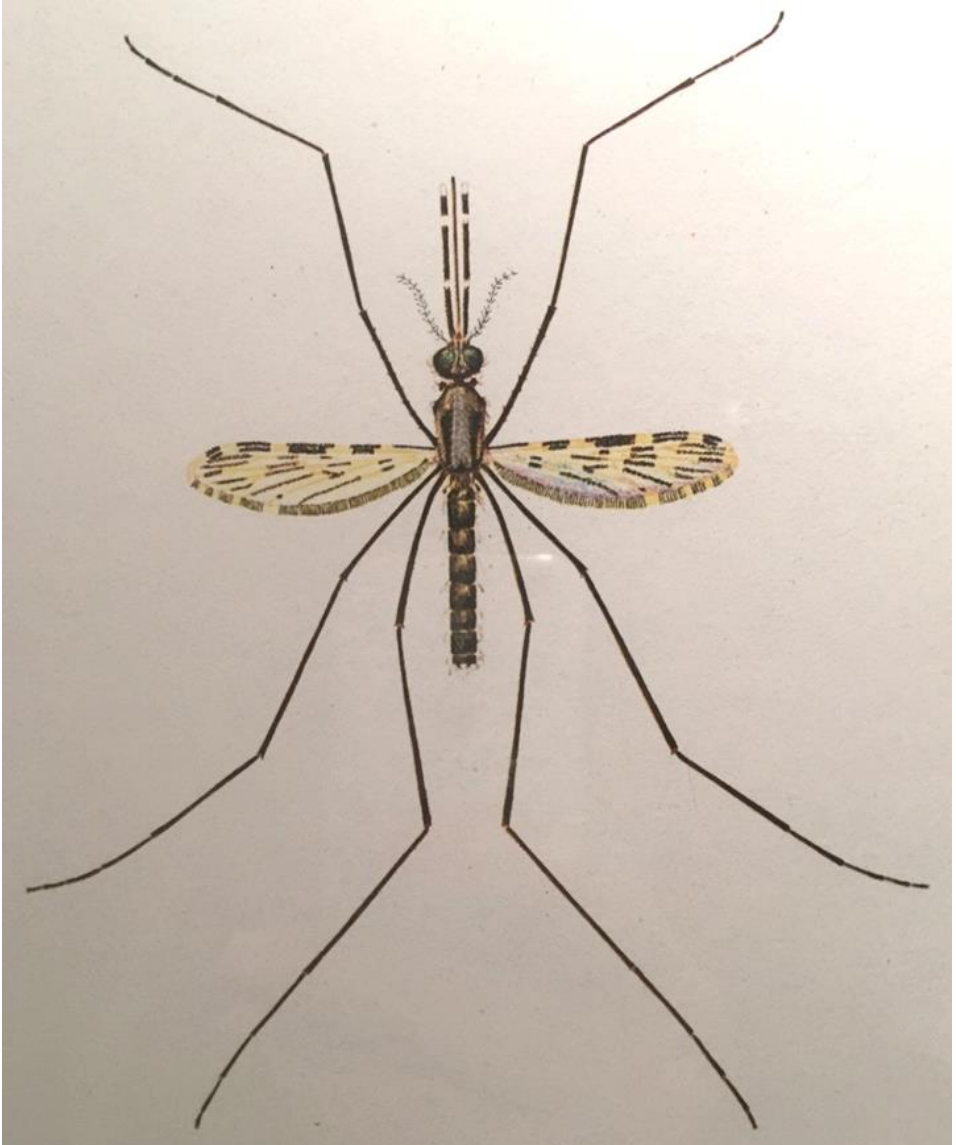
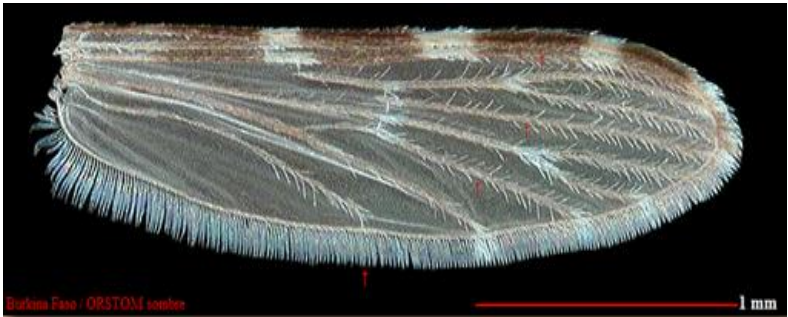
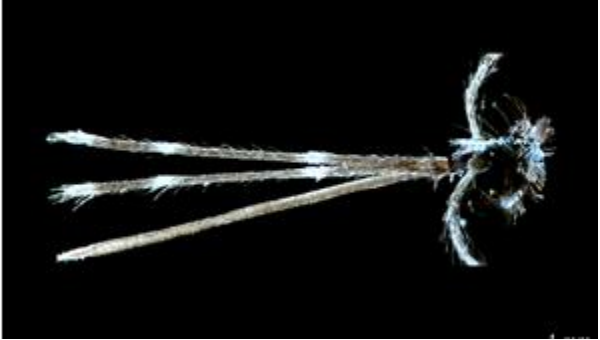
Speckled legs

Pale interruption on vein 1





Anopheles Mosquito





Session 7

COLLECTING ADULT MOSQUITOES



Session objectives

By the end of this session, you will be able to:

- Describe three common adult sampling methods for collecting adult mosquitoes:
 - CDC Light Traps
 - Prokopack aspirators
 - Pyrethrum spray catches
- Explain techniques for using each of these methods in the field



USAID
FROM THE AMERICAN PEOPLE



U.S. PRESIDENT'S MALARIA INITIATIVE

vectorlink

INTELLIGENT > INNOVATIVE > INTEGRATED

U.S. President's Malaria Initiative



Thank You!